

FLASHBACK

THE HAMMOND HISTORICAL SOCIETY

NOV / DEC 2025

Visit us on FACEBOOK: www.facebook.com/HammondHistoricalSociety

WEB: www.hammondhistoricalsociety.org EMAIL: contact@hammondhistoricalsociety.org

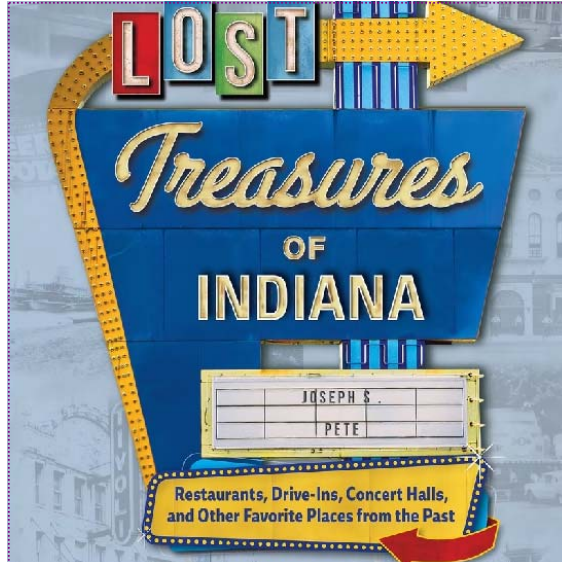
PROGRAM UPDATE

**SATURDAY,
NOVEMBER 1st
10 a.m. to 11:30 a.m.**

Lost Treasures of Indiana

**Presented by
Joseph S. Pete**

**Hammond
Public Library
Community Room
564 State Street
Downtown Hammond**



Joseph S. Pete, reporter for The Times of Northwest Indiana, will talk about his new book, *Lost Treasures of Indiana*. This is not just another book rehashing the same old stories. This lecture will discuss little known bits and relics of the past.

Join us as Joseph Pete explores lesser-known histories of the Hoosier State, such as the Indianapolis Motor Speedway's first-ever race that involved hot-air balloons not race cars, an amusement park that displayed cigarette-smoking bears, or a trolley park that roped in crowds with diving Arabian horses.

This book looks back at ghost towns like Hindostan, miniature towns like Littleville, and underground creeks in Downtown Indianapolis. It reminisces about familiar favorites like the L. S. Ayres Tea Room, King Cole building,

Burger Chef, Merrill's Hi-Decker, Rose-lyn Bakery, Sammy Terry, and Sau-zer's Kiddieland.

It evokes fond memories about bygone institutions from every corner of the Hoosier State like Market Square Arena, the Mesker Park Zoo Monkey House, the Little Nashville Opry, the Lincoln Museum, and the College Football Hall of Fame.

Travel back in time to revisit places like Marsh Supermarkets, Hook's Drug Stores, and other relics of the past. Learn about how Indiana gave the world laxative water, iconic skyscrapers, and many of the earliest cars to hit the road.

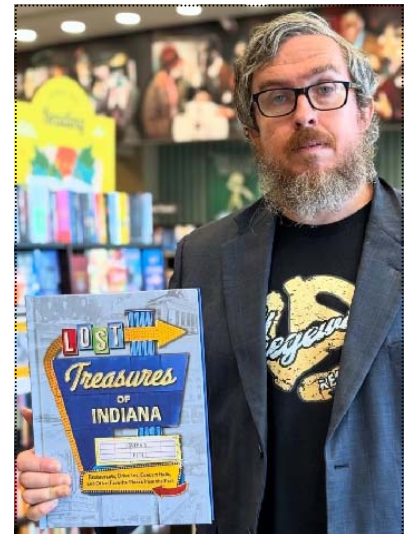
*The Board of Directors will
meet prior to this program at
9 a.m. for a business meeting.*

MEET THE AUTHOR JOSEPH PETE

Joseph Pete is an award-winning reporter for the Northwest Indiana Times newspaper and author of several books on local region history. Those books are titled— *Lost Hammond*, *Lost East Chicago* and *Indiana Harbor*, *Secret Northwest Indiana*, *100 Things to Do in Gary* and *Northwest Indiana Before You Die*, and his latest book *Lost Treasures of Indiana*.

Joseph Pete is shown here below at a recent book signing for his newest book, *Lost Treasures of Indiana*.

*Photo credit:
Barnes & Noble Valparaiso.*



Editor in Chief — William J. Uzdanovich
FLASHBACK is published monthly from
September thru May—Eight times a year
except in December, June, July & August

The Hammond Historical Society
is a 501 (C) (3) organization, all contributions
are tax deductible under section 170 of the
United States Internal Revenue Service
— Founded 1960

— FLASHBACK is a publication of
The Hammond Historical Society Incorporated
564 State Street, Hammond, IN 46320-1532
All Content Copyright © 2025



Printed on Recycled Paper



INSIDE THIS ISSUE VOLUME MMXXV-11

EVENT PHOTOS—HFD STATION #2 ANNUAL CEMETERY TOUR	PAGE 2
SHOP 'TIL YOU DROP! — SHOPPING IN DOWNTOWN HAMMOND	PAGE 3
MADE IN HAMMOND, INDIANA USA—PART TWO	PAGE 4-5
CAN YOU GUESS HOW FAST IT WILL MELT?	PAGE 6

The Hammond Historical Society — President, Tom Novak — Vice President, Keri Tharp
Secretary, William J. Uzdanovich — Treasurer, Taylor Hubbard — Officers serving for 2025-2026

OTHER NEWS and OTHER BUSINESS

NEW FIRE STATION #2 OPEN HOUSE

**SATURDAY
OCTOBER 11th, 2025**

We set up shop to welcome Robertsdale's brand new fire station, located on Calumet Ave. across from Wolf Lake. Thanks to all who stopped by our booth, and those who helped staff the booth.



PHOTO ALBUM OF THE 2025 OAK HILL CEMETERY TOUR

Getting Ready for The Tour

**SATURDAY,
SEPTEMBER
27th, 2025**

Was the time for a little light duty cleanup ahead of the tour.



140 Years of History Oak Hill Cemetery Tour SUNDAY OCTOBER 5th, 2025

Photos courtesy of
Tony Arduino and
Tom Novak.



SHOP 'TIL YOU DROP!



THOSE WERE THE DAYS

Crowded Streets and Packed Stores
Santa's Helpers Converge on Downtown Hammond
Shopping in Downtown Hammond During the 1960s

Do you remember shopping there?
Downtown Hammond was home to over 200 stores
What stores did you shop at?

Here is a short list of some of the bigger and
well known stores and shops from that era.



BAER'S YOUNG FASHIONS
5135 HOHMAN AVENUE

BARELLI'S APPLIANCES
463 STATE STREET

COUSINS JEWELRY
5133 HOHMAN AVENUE

JACK FOX AND SONS
HOHMAN AND FAYETTE

L. FISH FURNITURE
485 STATE STREET

GOLDBLATT'S
5206 HOHMAN AVENUE

W. T. GRANT
5213 HOHMAN AVENUE

HARVEY BROTHERS
450 STATE STREET

HESS PARAMOUNT JEWELERS
5403 HOHMAN AVENUE

JOE HIRSCH
5313 HOHMAN AVENUE

HOOSIER STYLE SHOP
5260 HOHMAN AVENUE

KAY JEWELERS
5207 HOHMAN AVENUE

S. S. KRESGE
5129 HOHMAN AVENUE

LESSER'S JEWELRY
446 STATE STREET

ARMIN LIPSIG JEWELER
124 SIBLEY STREET

MILGRAM'S SHOES
5130 HOHMAN AVENUE

J. W. MILLIKAN
449 STATE STREET

EDWARD C. MINAS
460 STATE STREET

MONTGOMERY WARD
5247 HOHMAN AVENUE

NAGDEMAN'S
5148 HOHMAN AVENUE

J. C. PENNEY
5134 HOHMAN AVENUE

RABIN'S APPLIANCES
5421 HOHMAN AVENUE

ROSALEE SMART SHOPPE
5233 HOHMAN AVENUE

RUTH'S FASHION SHOP
5254 HOHMAN AVENUE

SAX FINE FOOTWEAR
5261 HOHMAN AVENUE

SCHLOER SONS SHOES
141 STATE STREET

SEARS ROEBUCK
452 STATE STREET

SEIFER FURNITURE
531 STATE STREET

STOLTZ DRUGS
486 STATE STREET

TILLES FURNITURE
5322 HOHMAN AVENUE

WERTH FURNITURE
508-18 STATE STREET

F. W. WOOLWORTH'S
5201 HOHMAN AVENUE

— MADE IN — HAMMOND INDIANA ★ USA

Over the years, many factories and various manufacturing facilities have called Hammond home. In doing so, they have made the city one of the most diversified industrial cities in the nation. From industrial manufacturing, commercial manufacturing, and food manufacturing, these industries have produced products used within the Hammond region and every state in the union. Some companies even sell their finished products beyond our nation's borders. Here we take a look at just a few of those companies.

Commercial Manufacturing Commercial Wallpaper Mill formerly at 712 Hoffman Street

The **Commercial Wallpaper Company** was founded in Chicago in 1911 and moved its operations to Hammond in 1927. Its equipment included six printing machines along with complete grounding and rolling machines, and sample book making machines. The factory had an initial production capacity of 6 million rolls of wallpaper per year and gave employment to 60 to 75 workers. The company's new Hammond location also provided additional space for future expansion.

After its first 44 years of operation the company produced and sold over 400 million rolls of wallpaper, making it one of the largest manufacturers of wallpaper in the world.

The company's products featured traditional designs to modern designed, pre-pasted and vinyl wallpapers. Its six product lines were distributed coast to coast, along with Canada, Europe, Australia, and South America.

Its 6 product lines were widely distributed across America, Canada, Europe, Australia and South America. In just over 40 years it sold over 400 million rolls of wallpaper.



Commercial Manufacturing Junior Toy Company formerly at 215 Marble Street

Junior Toy Company was originally founded in 1925 as a metal stamping company [And-Away Stamping Company] located on Columbia Avenue near the Grand Calumet River. It entered the toy field in 1930, producing velocipedes and scooters and expanded very rapidly over the years. It moved to the Marble Street location in 1934 when it purchased the 2 ½ acre site of the former Enterprise Bed Company.

The company's tricycles became very popular and were sold by many of the nation's largest department stores that included Sears Roebuck,

J. C. Penny's, Montgomery Ward, and Marshall Field. In 1952 the company was purchased by [AMF] American Machine & Foundry.

One of the world's largest makers of children's riding toys.

In 1954 it started construction on new company offices and employee facilities that added 12,000 sq. ft. to the company's 140,000 sq. ft. plant.

At a cost of an estimated \$200,000, the new building freed up space in its main building. That space would then be utilized for sorely needed manufacturing space. The company's employment had grown from 750 to more than 1,000 employees, working three shifts.



Deluxe 16" Model Junior
**ROADMASTER
SIDEWALK BIKE**
Made in Hammond
Sold in Hammond
24⁸⁸

Convertible from boy's to girl's model, removable top cross bar. Chrome plated steel frame, fenders, wheels, handlebars, pedals, chain, sprockets, steering stems, handle ends, double and single seat, available in inside leg length from 16 inches to 24 inch, black or white, with red and white stripes, silver wheels.



16" Standard Model Junior
**ROADMASTER
SIDEWALK BIKE**
Made in Hammond
Sold in Hammond
19⁸⁸

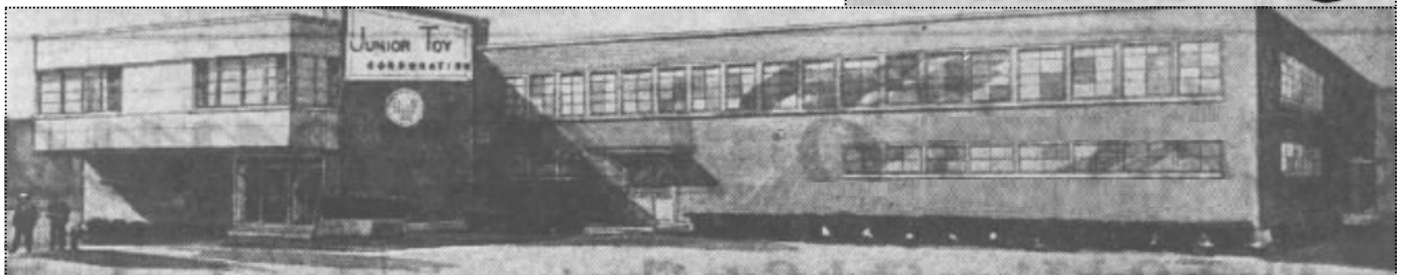
Removable top cross bar, convertible from boy's to girl's model. Chrome plated steel frame with rubber lined grips, 175 anti-rattle, moment molded rubber tires, fenders red with white tire strips, silver wheels.



50¢ DOWN



**WILL HOLD YOUR PURCHASE
UNTIL NOVEMBER 20th**



— MADE IN —
HAMMOND
INDIANA ★ USA

Industrial Manufacturing
American Can Company
formerly at 2501 165th Street

The **American Can Company** officially opened its new Hammond plant on Wednesday, June 11, 1958. Although no cans were manufactured there, this unique facility produced enough metal to supply the eight Canco fabricating plants located in Indiana and Illinois. It was billed as the only plant of its kind in the world. The Hammond plant employed 400.

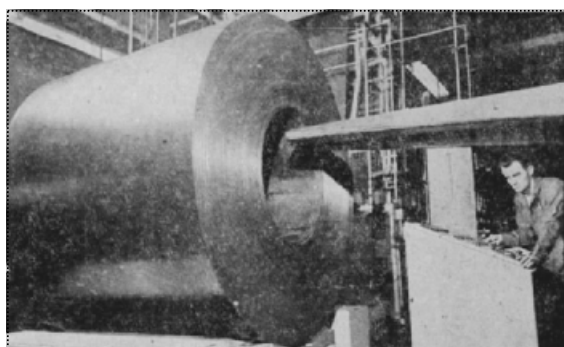
Inside of the cavernous 329,000 sq. ft. building was a vast array of complex, precision machinery. Nine high speed lines were designed to transform giant coils of tin plate into accurately cut flat sheets for the manufacture of metal cans. Another complete line was equipped to chemically treat steel plate for tinless metal cans.

The nine production lines each took coils of steel plate weighing up to 16,500 pounds, automatically unwound them, cleaned them, and coated the plate with a

corrosion-resistant chemical solution. The sheets were eventually formed into cans. The huge coils of steel were processed at speeds up to 600 feet per minute, at which time they were inspected, cut and stacked all in one continuous operation.

When the plant first opened, it was the only plant of its kind in the world. It was the first facility devoted solely to process coils, and the only one in the container industry equipped for the chemical treatment of steel plates for use in tinless metal cans.

The company chose the city of Hammond for the new plant because of its proximity to steel suppliers.



Commercial Manufacturing
Straube Piano Company
formerly at Manila & Havana Avenues

The **Straube Piano Company** moved its manufacturing and offices from Chicago to Hammond in 1904. It designed and constructed a modern and safety-enhanced building featuring automatic fire doors and fire walls, along with standpipes throughout the entire structure. As its business grew, it expanded to meet the demand. Its new facility was able to produce 3,000 finished pianos a year, with the help of its 200 employees.

The company would introduce its first player piano in November 1909. Around

the time of 1914 to 1916, the Straube Piano Company produced about 12 pianos a day.

Straube Piano manufactured and built several types of pianos; Upright, Grand, Player Pianos [foot and electric], and Reproducing Grand Pianos.

Straube pianos had acquired world-wide fame from musicians who loved pianos with real tone and elegant design. Many of the famous and most popular piano dealers in the world overwhelmingly chose and sold Straube pianos.

Straube pianos were sold and shipped to far flung locations such as Spain, the Philippines, and Australia.

Straube Piano was made famous by its player pianos. It also made Upright, Grand as well as Reproducing Grand Pianos.



The Hammond Piano

A Master in the Field of Medium-Priced Instruments



Not a cheap commercial product, but a confidence-winning, confidence-retaining piano in every particular. Dealers can rely on the catalogue descriptions of Hammond Pianos as absolutely true. Honest construction and honest representation of goods have become inalienably associated with the name "Hammond."

The new style No. 35, Hammond Piano, herewith illustrated, will be found a welcome addition to a line noted for its attractive case designs and exceptional all-the-way-through values.

The Hammond Player Piano

will be ready for shipment next month

It is the result of long experimentation and investigation, and is priced at a figure which will make it a leader among popular-priced players. It is a combination of an absolutely reliable player action and a piano built to withstand the extraordinary demands upon it. Write today for illustrations and particulars regarding the entire Hammond line.

STRAUBE PIANO COMPANY
Manufacturers of Straube and Hammond Pianos

OFFICE AND FACTORY, HAMMOND, IND. CHICAGO SALES OFFICE, 312 REPUBLIC BUILDING

Article source: NWI Times/Newspapers.com
Images: NWI Times/Newspapers.com



THE HAMMOND HISTORICAL SOCIETY
564 STATE STREET HAMMOND IN 46320-1532

— FIRST CLASS MAIL —

ADDRESS SERVICE REQUESTED



Can You Guess How Fast It Will Melt???

It may be a little early to be talking about snow, but let's face it, it will be here before you know it!

DATELINE: March 18, 1960

The Downtown Hammond Council held a contest to guess when a large snow-pile would melt down to a height of four feet at its highest point. The king-sized pile of snow was located at the southwest corner of the Russell Street Auto Park, about a half block east of Hohman Avenue.

If you guessed the correct day and time that it was to melt down to the four-foot height, you would win a \$25 merchandise certificate offered by the Downtown Hammond Council. The snow-pile was measured twice a day—at 10 a.m. and once again at 3 p.m.

Melting Progress Report— the near balmy weather on Sunday, March 27, 1960 had made no noticeable dent in the height of the near ten foot snow-pile. An unofficial measurement that was taken earlier that day showed that the mound of snow was just a frac-

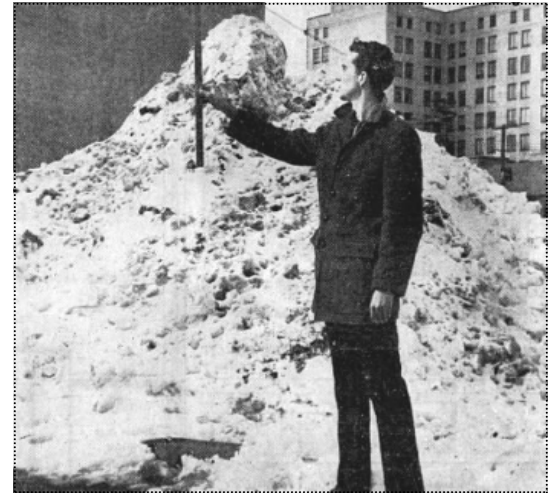
tion under its original recorded height.

It was reported that more than 1,200 people entered the contest through entry blanks that were printed in The Hammond Times newspaper. The official count of 1,218 entries was received at the Downtown Hammond Council's office by the closing deadline of the contest.

The winner of the contest was announced on Monday, April 4, 1960, a 14 year-old freshman at Thornton Fractional North in Calumet City, Illinois. His entry had the earliest postmark for a 10 a.m. April 2, 1960 guess of when the snow-pile would melt to a height of four feet. He was joined by 63 other entries that also guessed that the ten-foot snow-pile would melt down to a height of four foot level on April 2, 1960.

PHOTO TOP RIGHT: Taking an official measurement of the snow-pile.

PHOTO BOTTOM RIGHT: Secretary for the Downtown Hammond Council sorts through the pile of entries.



Source info and above images:
NWI Times Via Newspapers.com