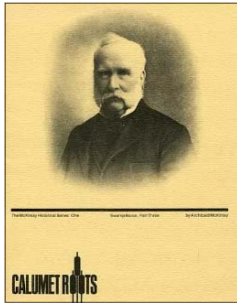


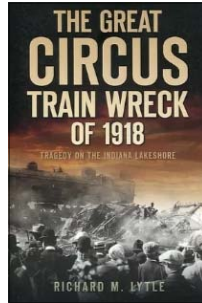
PAPER & INK *Books and Publications from The Hammond Historical Society*



Calumet Roots

By Archibald McKinlay
*McKinlay Historical Series One
 Swamp Baron, Part Three.*
 A look back at the region through
 the words of Historian and Times
 newspaper Columnist Archibald
 McKinlay.

\$2.00 SOFTCOVER
 32 PAGES



The Great Circus Train Wreck of 1918

By Richard M. Lytle
 A new look at the infamous 1918
 circus train wreck using new prime
 source materials and secondary
 sources from author Richard Lytle.

\$20.00 SOFTCOVER
 109 PAGES



Hammond Braves

By William T. Tuley
 History of a local baseball team
 founded by William Tuley. The
 team played against other teams
 that were mainly clubs, organiza-
 tions and local businesses.

\$2.50 SOFTCOVER
 76 PAGES

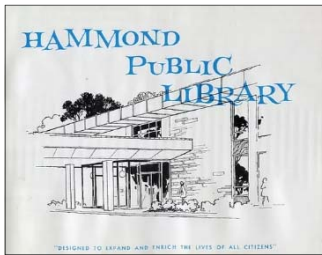


History of the Hammond Fire Department

By Gordon D. Whitney
 Joining the Hammond Fire Depart-
 ment in 1949 and rising from Pri-
 vate to Senior Captain, he com-
 piled a complete history and ar-
 chives of the department.

\$2.00 SOFTCOVER
 38 PAGES

Hammond Public Library



Get to know a little more
 about the Hammond Pub-
 lic Library system as it
 dedicates its new main
 building in 1967.

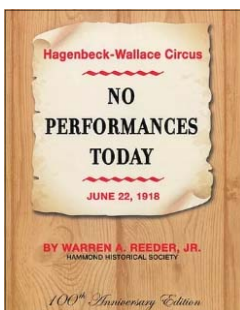
\$1.00 SOFTCOVER
 16 PAGES

Lake County Interim Report



A complete inventory of
 historic and notable
 buildings and structures
 located throughout the
 entire county. Great for
 architectural buffs.

\$5.00 SOFTCOVER
 449 PAGES



No Performances Today

By Warren A. Reeder Jr.
 An account of the events leading
 up to, during, and following the
 wreck of the Hagenbeck-Wallace
 Circus Train near the Ivanhoe
 switch tower near Gary, Indiana
 on June 22, 1918. *REPRINT*

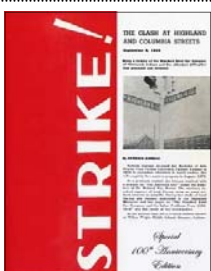
\$15.00 SOFTCOVER
 137 PAGES



Reejin Archetypes

By Archibald McKinlay
 A collection of workaday myths that
 were mainly obtained from inter-
 views from surviving "regionites" and
 old local newspapers along with a
 few from outside of the region.

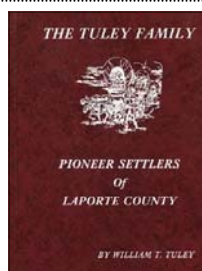
\$5.00 SOFTCOVER
 240 PAGES



STRIKE!

By Patricia Gorman
 The clash at Columbia and Highland
 Streets. The Standard Steel Car
 Company and its labor problems
 from 1906 to 1919. *REPRINT*

\$5.00 SOFTCOVER
 38 PAGES



The Tuley Family— Pioneer Settlers of LaPorte County

By William T. Tuley
 William [Bill] Tuley was born in
 Hammond and attended Wallace &
 Grade Schools and Hammond High.

\$5.00 HARDCOVER
 404 PAGES

FLIP OVER FOR CONVENIENT ORDER FORM ON THE BACKSIDE OF THIS PAGE

Hammond Historical Society Publications Order Form

PUBLICATION TITLES and DATES	QUANTITY	PRICE	TOTAL COST
Calumet Roots [Swamp Baron] © 1981		\$2.00 ea.	
Cemetery Tour Bundle [A] = 4 BOOKS Tours 1, 2, 3 and 4 © 2007		SALE \$2.00 set of 4	
Cemetery Tour Bundle [B] = 4 BOOKS Tours 5, 6, 7 and 8 © 2007		SALE \$2.00 set of 4	
The Great Circus Train Wreck of 1918 © 2010		\$20.00 ea.	
Hammond American Bicentennial Yearbook © 1976		\$2.50 ea.	
Hammond Braves © 1979		\$2.50 ea.	
History of the Hammond Fire Department © 1978		\$2.00 ea.	
Hammond Public Library © 1967		\$1.00 ea.	
Lake County Interim Report Historic Sites & Structures © 1996		\$5.00 ea.	
No Performances Today © 1972, 2018 <i>Reprint Edition</i>		\$15.00 ea.	
Reejin Archetypes © 1996		\$5.00 ea.	
STRIKE! © 1974, 2019 <i>Reprint Edition</i>		\$5.00 ea.	
The Tuley Family—Pioneer Settlers of LaPorte County © 1994		\$5.00 ea.	

THANK YOU FOR YOUR ORDER

SHIPPING AND HANDLING

\$4.95

* PLEASE NOTE— ORDERING A LARGER QUANTITY OF BOOKS MAY INCUR AN ADDITIONAL SHIPPING FEE.

* SEE NOTE AT LEFT

Please send check or money order only DO NOT SEND CASH

GRAND TOTAL

SOLD TO—
NAME: _____

ADDRESS: _____

CITY/STATE/ZIP: _____

EMAIL: _____

TELEPHONE: _____

ORDERING INSTRUCTIONS:

AFTER COMPLETING THIS FORM
MAIL YOUR ORDER TO:

HAMMOND HISTORICAL SOCIETY
PUBLICATION FULLFILLMENT
564 STATE STREET
HAMMOND IN 46320-1532

*Please allow up to 14 business days
for processing and shipping.*

— FILL OUT ONLY IF SENDING TO A DIFFERENT ADDRESS —

SHIP TO—

NAME: _____

ADDRESS: _____

CITY/STATE/ZIP: _____

— FOR INTERNAL USE ONLY —

ORDER
RECEIVED BY: _____

PACKED BY: _____

SHIP DATE: _____

SHIPPED VIA: _____